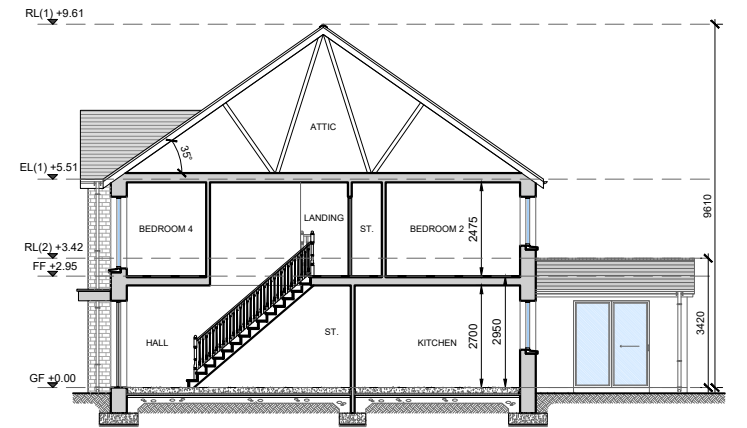
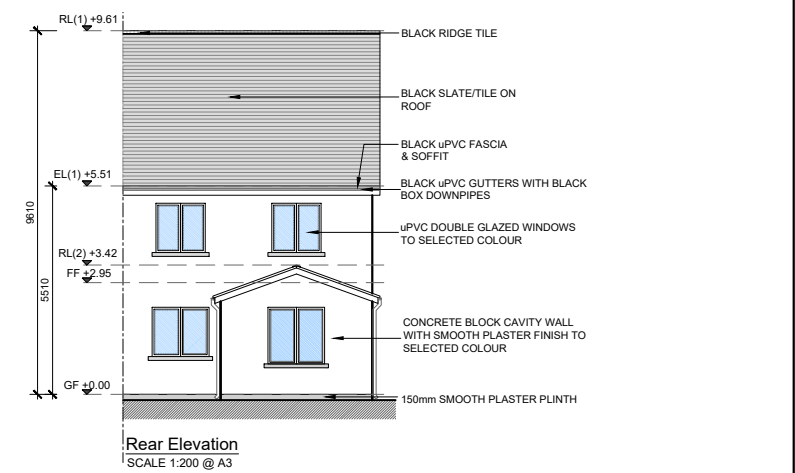
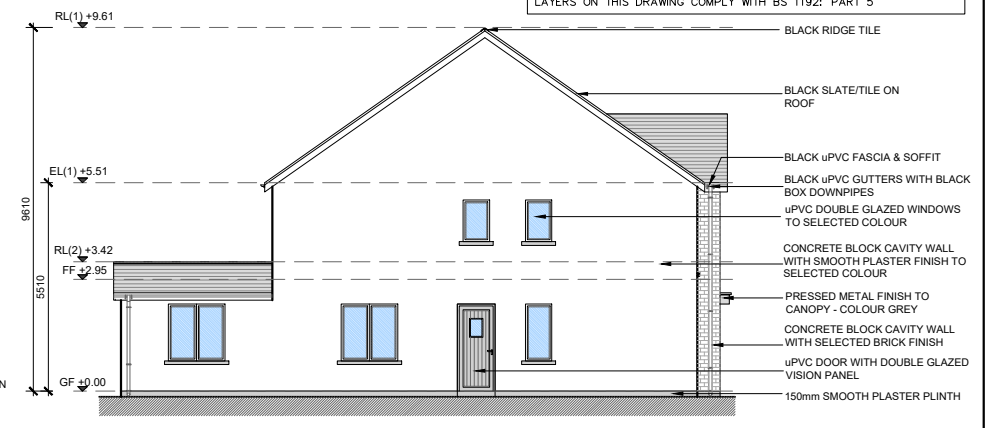
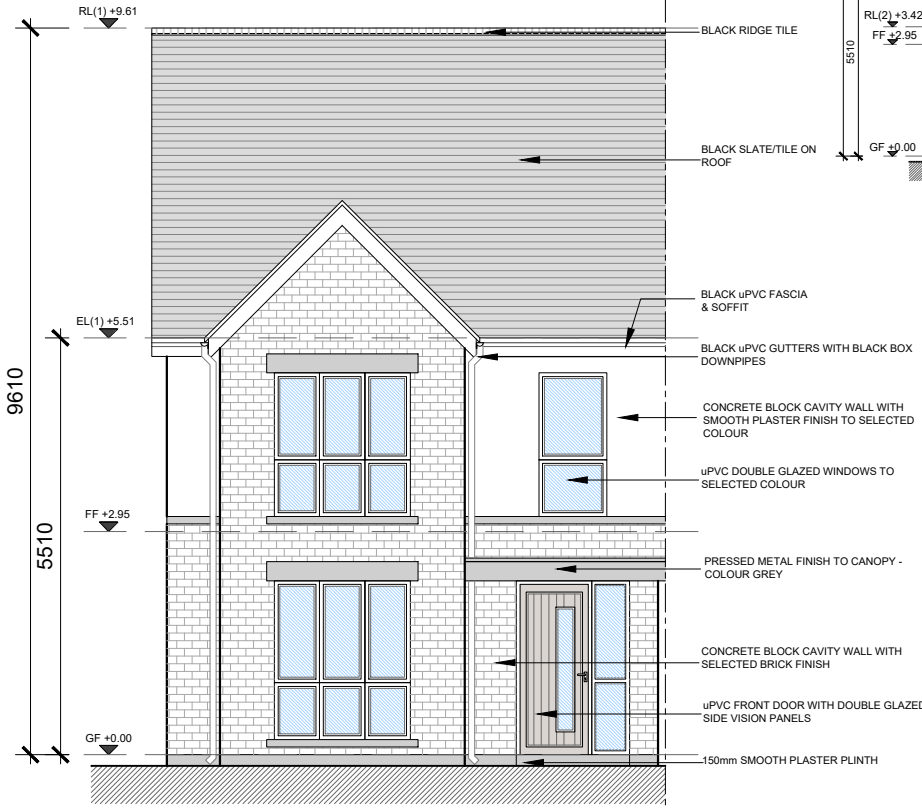
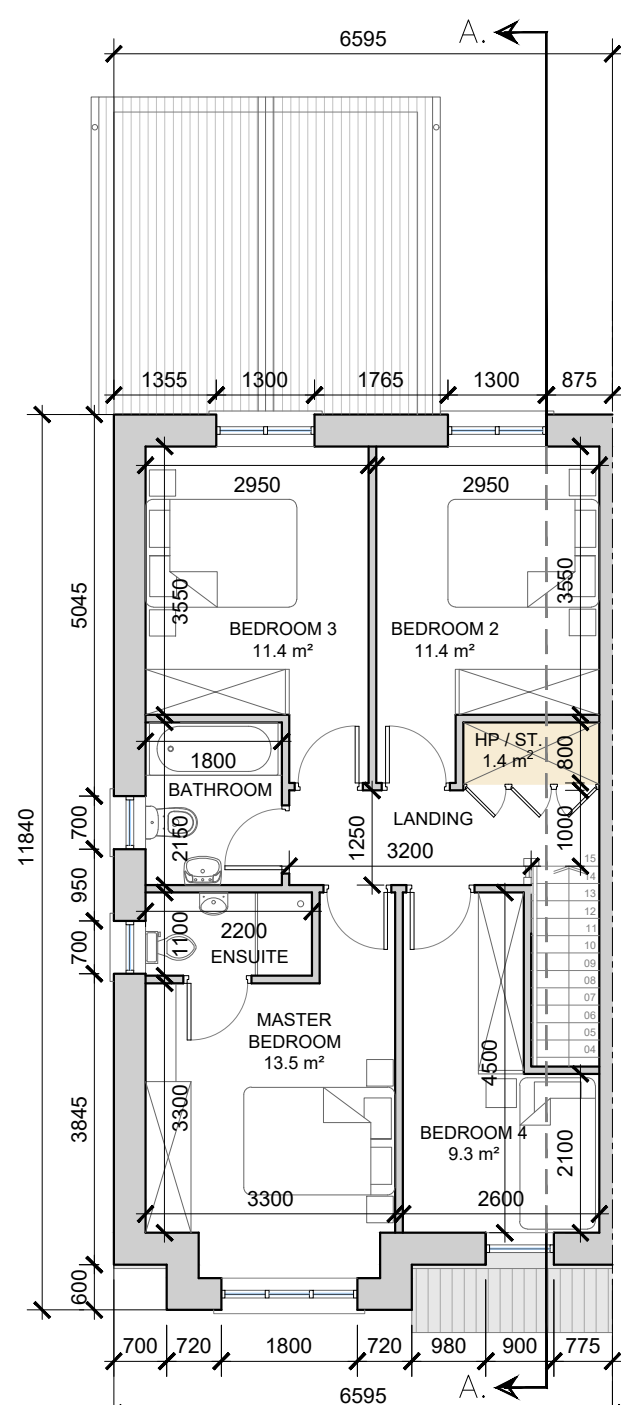
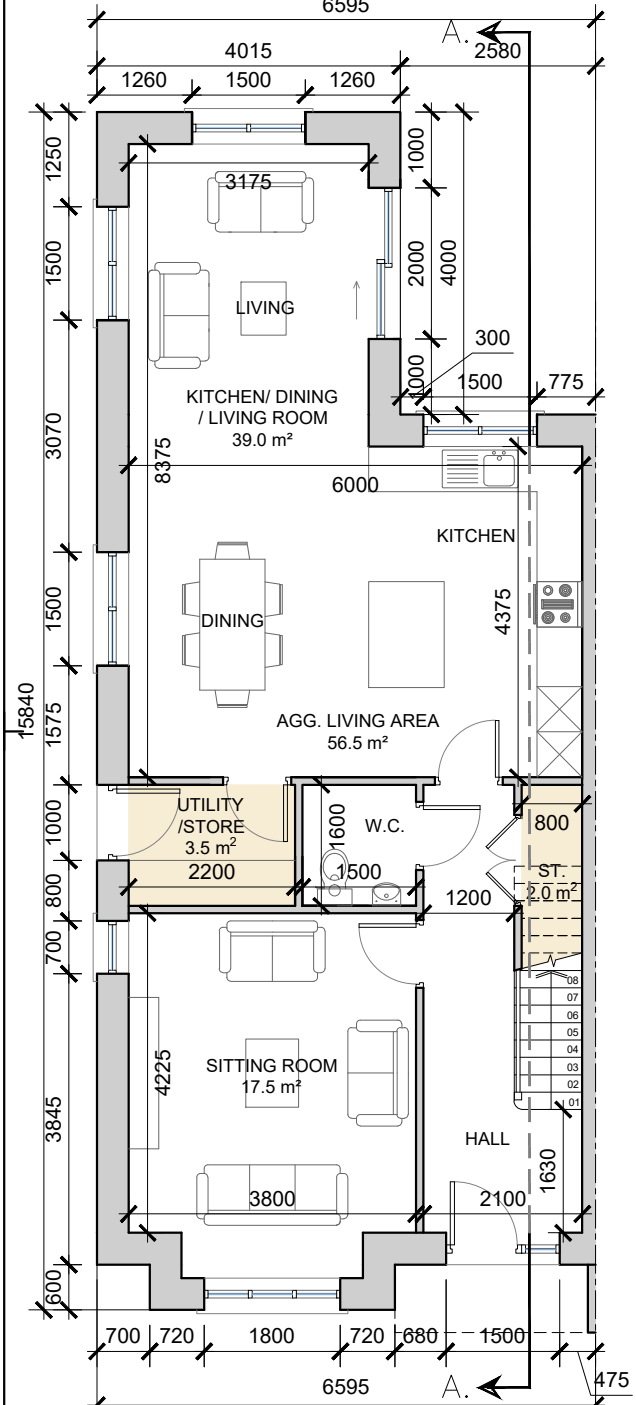


DO NOT SCALE. WORK TO FIGURED DIMENSIONS ONLY.
 ALL EXISTING DIMENSIONS TO BE CHECKED ON SITE.
 DRAWN ON AUTOCAD R2004 AT DEADY GAHAN ARCHITECTS LTD
 LAYERS ON THIS DRAWING COMPLY WITH BS 1192: PART 5

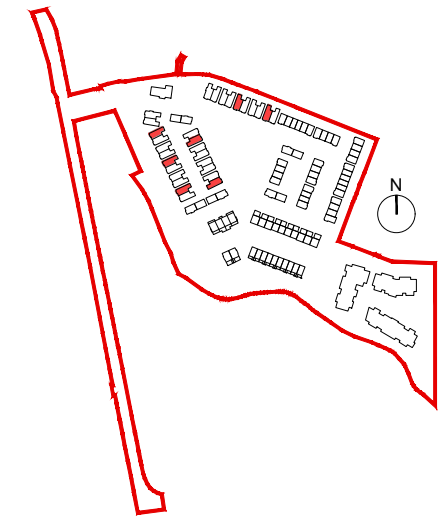
HOUSE TYPE A1
 4-bed Semi-Detached (7 person)

AREA: 140.3 SQ.M.
1,510 SQ.FT.

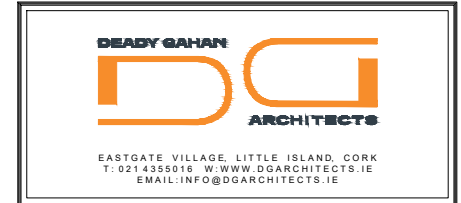
STORAGE total - 6.9 sq.m.
 6595



House Type A1 - Character Area 1
 See site plan (dwg no. 23049/P/003) for material locations



date	rev	name	chk	note
07.05.24	P1	MP	EJG	ISSUE FOR PLANNING



Project
 PROPOSED RESIDENTIAL DEVELOPMENT
 AT PORT ROAD, KILLARNEY, CO. KERRY

Drawing title
 HOUSE TYPE A1 - 4-BED SEMI DETACHED
 PLANS, ELEVATIONS & SECTION A-A

Scale	Drawn	Checked	Date
1:100/200 @ A3	MP	EJG	07.05.24

Project No.	Dwg. No.	Revision
23049	23049/P/100	P1

Information / Comments	Tender
Information / Comments	<input type="checkbox"/>
Planning	<input type="checkbox"/>

NOTE: POSITION OF NORTH POINT & LEVELS VARY.
 SEE SITE PLAN FOR ORIENTATION - DWG NO. 23049/P/003